



## FOR LEASE

3400-3414 Gardner Avenue | Kansas City, MO

**2.82**  $\pm$  acres

### Property Highlights

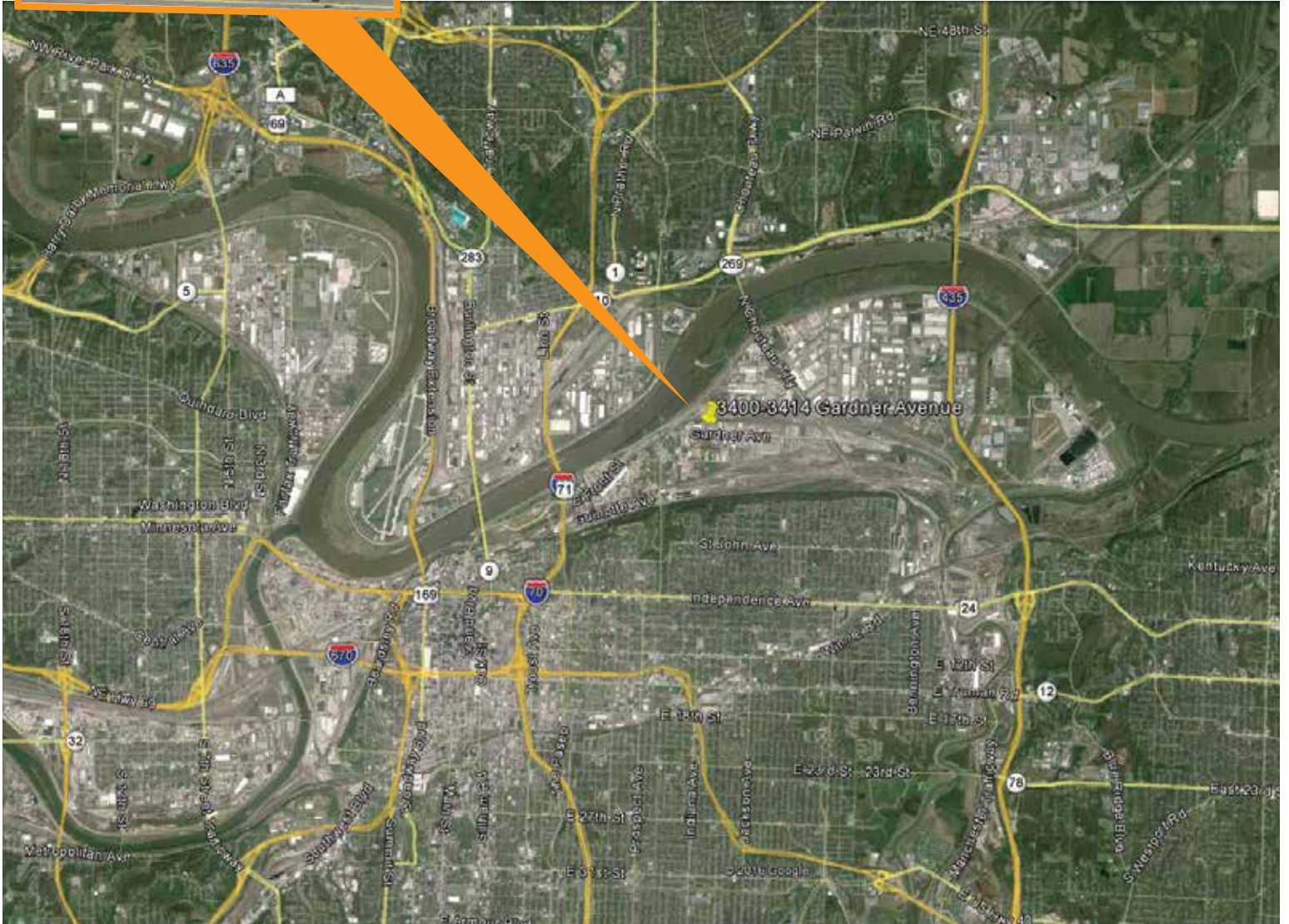
- Fenced
- Gravel surface
- Great access to I-435 & I-35
- \$4,250/month-Gross Industrial

### Contact:

Mark Fountain, CCIM, SIOR  
mark@truenorthindustrial.com  
816.223.6647

Nick Tinnel  
nick@truenorthindustrial.com  
816.914.5689

[www.TrueNorthIndustrial.com](http://www.TrueNorthIndustrial.com)



**3400-3414 Gardner Avenue | Kansas City, MO**

2.82 +/- acres